

VELA

)( *Dorchester Collection*

DUBAI



# OMNIYAT

THE ART OF ELEVATION

*A vision beyond property, beyond place.*

The Art of Elevation embodies our dedication to imagining the extraordinary and building it into reality. We elevate the exceptional to create immersive living masterpieces framed by Dubai's iconic skylines.

*These are our works of art, and for us,*

art epitomises more than a simple statement of luxury.

Art is the ultimate expression of creativity, quality and rarity.

*It comes from a place of intellect and innovation.*

It originates from both the mind and the heart. The OMNIYAT artistry is realised in elevating the experience and empowering the future of luxury living.

To bring together place, purpose, design, innovation and service to forever transform what you expect from the spaces you inhabit.

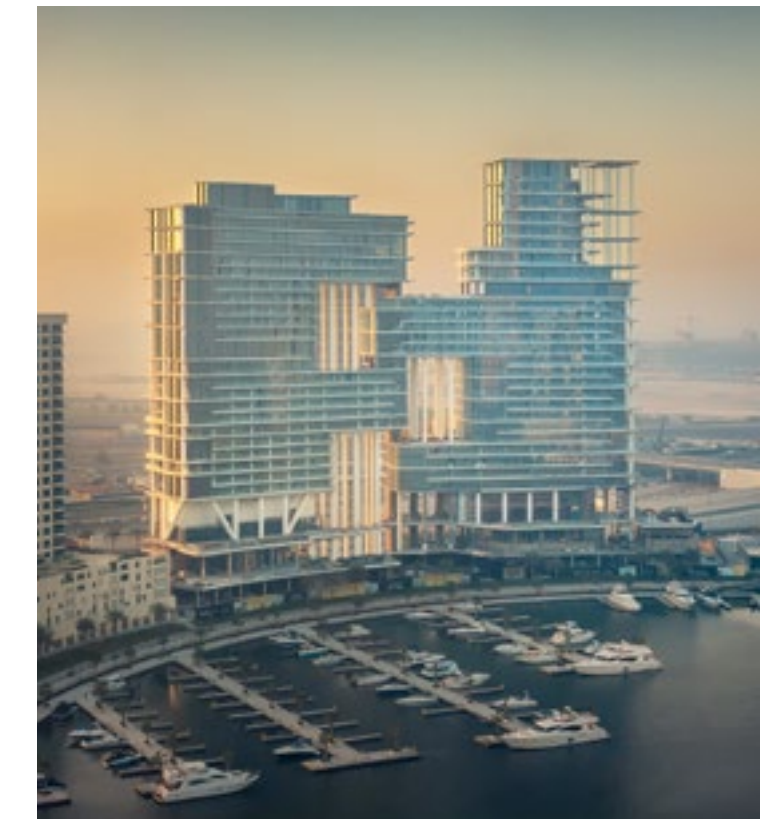




# A Bespoke Collection of Ultra-Luxury Properties

To assure iconic status, quality and value, OMNIYAT curates partnerships with industry luminaries, including the distinguished hospitality group, Dorchester Collection.

Occupying the most sought-after locations, OMNIYAT properties, managed by Dorchester Collection, are designed to create a superior return on investment and to give every owner the OMNIYAT guarantee of living in a bespoke elevated space that reflects their personality, achievements and harmony for their future.





Introducing OMNIYAT's new jewel of Marasi Bay

VELA

Born in the Latin for 'sail',  
*VELA majestically draws us upwards  
to new heights of refinement, beauty and design.*







# SUBLIME

*On soaring sails, rise higher  
to new realms of the sublime*





Rising high above the gentle flow of Marasi Bay, VELA, Dorchester Collection, Dubai, is a sublime celebration of contemporary waterfront in Dubai.

Within the wonderful care of Dorchester Collection's legendary service, a lifestyle of comfort and ease awaits.

Inspiring architecture, spacious design and wonderful views meet to create a place of true beauty.







## *An Address That Speaks Volumes*

Spectacularly located in the Burj Khalifa District, VELA is the latest addition to OMNIYAT's upcoming ultra-luxury waterfront destination, curated with discretion and discernment by Dubai's defining developer.

Drawing success from the neighbouring The Lana Hotel and The Residences, Dorchester Collection, Dubai, and inspired by OMNIYAT's vision to reshape Marasi Bay, VELA embodies the higher realms of possibility and sophistication that is set to define this iconic destination.



WN DUBAI

DOWNTOWN BOULEVARD

DUB

H RIDGE

AL ASAYEL STREET

MARASI  
BAY

Burj Khalifa/  
Downtown

Dubai Canal

VELA

Marasi Marina

Burj Al Arab

LANA

Dubai Canal

DUB  
D

RAS AL KHOR





# REIMAGINE

*The doorway to an elevated way of life,  
immersed in beauty and surrounded by energy*



In a re-imagined approach to urban living, OMNIYAT is reshaping Marasi Bay into Dubai's upcoming ultra-luxury waterfront destination, envisioned with discretion and discernment by Dubai's defining developer.

Occupying the most fascinating and promising location in the Burj Khalifa District, here innovation and expertise converge to celebrate the best of waterfront living, fuelled by the unstoppable flow of Dubai.





*Magnificent and inspiring, more than just a place,  
Marasi Bay is becoming an address worthy of global acclaim.*







The Duality  
*of City and Sea*





Bringing together the vibrancy of Downtown Dubai with the peace and prestige of the Marasi Bay waterfront, VELA presents a doorway to an elevated way of life, immersed in beauty and surrounded by energy.

The immediate access to the tranquillity of the sea, directly from your own marina mooring is extremely special.





# Panoramic Views







*A front-row seat for the  
magnificent spectacle that surrounds.*

VELA has been positioned to capture breathtaking views of Marasi Bay and the iconic Burj Khalifa amid the glittering Downtown Dubai cityscape. Floor-to-ceiling windows flood the living area with light by day, as well as awe-inspiring views by night.





# FLOW

*Where sunlight meets glass and water flows  
on sweeping edges of sublime perspectives.*







Brought to you by OMNIYAT, VELA has been orchestrated by a harmony of the world's leading design consultants.

Creators of global architectural masterpieces, award-winning practice Foster + Partners designed VELA to embody the fluidity and beauty of the Marasi waterfront. To deliver the ultimate expression of VELA's rare beauty, French interior designer duo, Gilles & Boissier, have brought their distinctive taste to VELA in ways that are both striking yet serene.

VELA





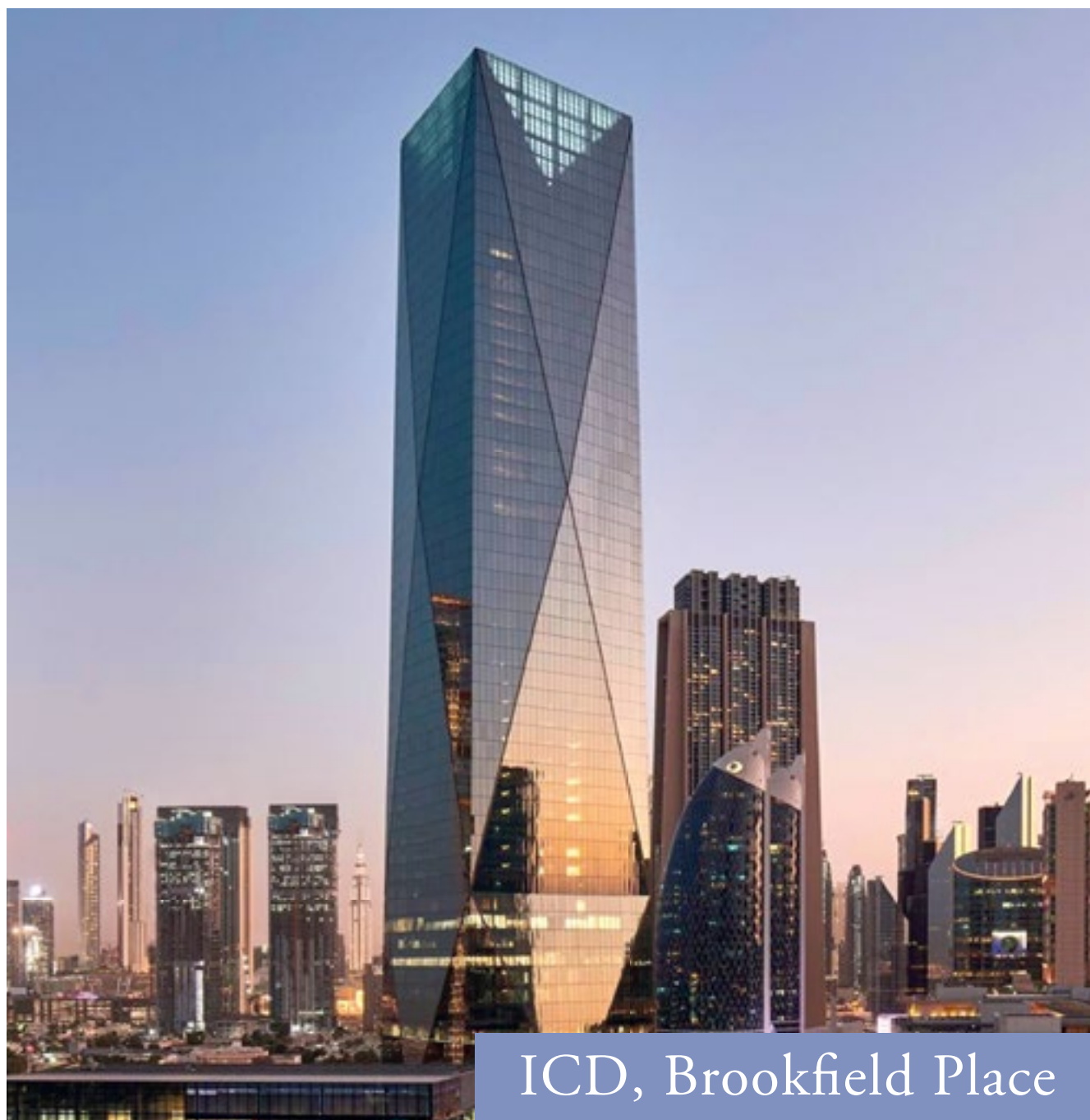
Apple Headquarters

## Architectural Excellence

### **Foster + Partners**

VELA has been crafted by award-winning practice Foster + Partners are the masterminds behind Apple's California headquarters, France's dramatic Millau Viaduct and London's 'Gherkin' tower.

The firm has garnered various awards, including the coveted Pritzker Prize in 1999.



ICD, Brookfield Place



Millau Viaduct

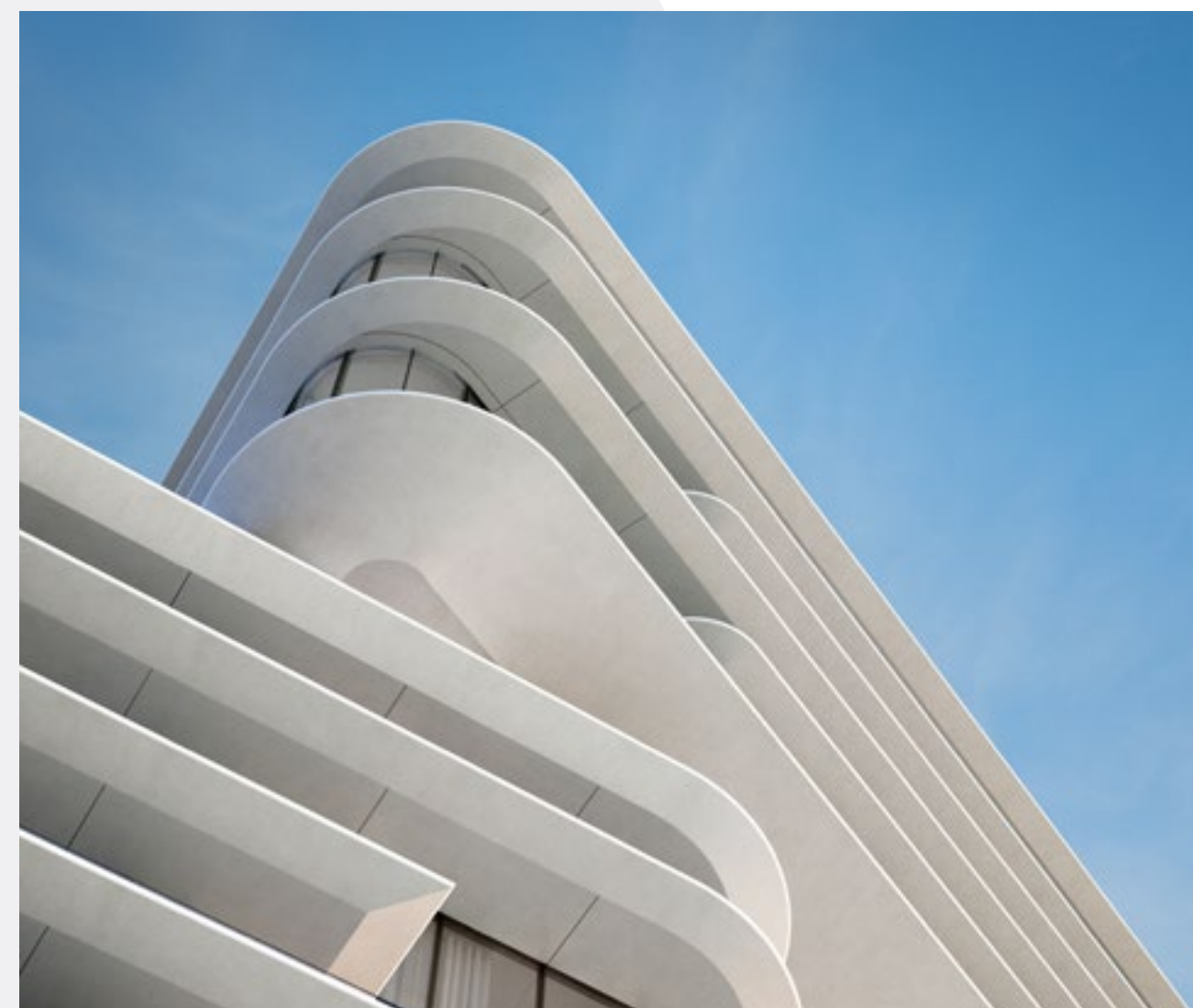


OMNIYAT and Foster + Partners have collaborated on numerous properties that have reshaped Dubai's skyline. These include ORLA, Dorchester Collection, Dubai, and The Lana, Dorchester Collection, Dubai.

VELA is the latest addition designed to embody the fluidity and beauty of the Marasi waterfront. Through majestic height and flowing curves, VELA celebrates the magnificent beauty of this unique destination.



ORLA, Dorchester Collection, Dubai



The Lana, Dorchester Collection, Dubai



VELA, Dorchester Collection, Dubai



# Interiors Beyond Compare

**GILLES & BOISSIER**

Parisian designer duo Gilles & Boissier have brought their signature refined design to the forefront of OMNIYAT's properties once again. Drawing inspiration from their celebrated work on The Lana Residences, the interiors of VELA exude a striking yet serene ambiance.

Gilles & Boissier's projects include the Mandarin Oriental Paris; the Mandarin Oriental Ritz Madrid; and Hakkasan restaurants in Dubai and the US.

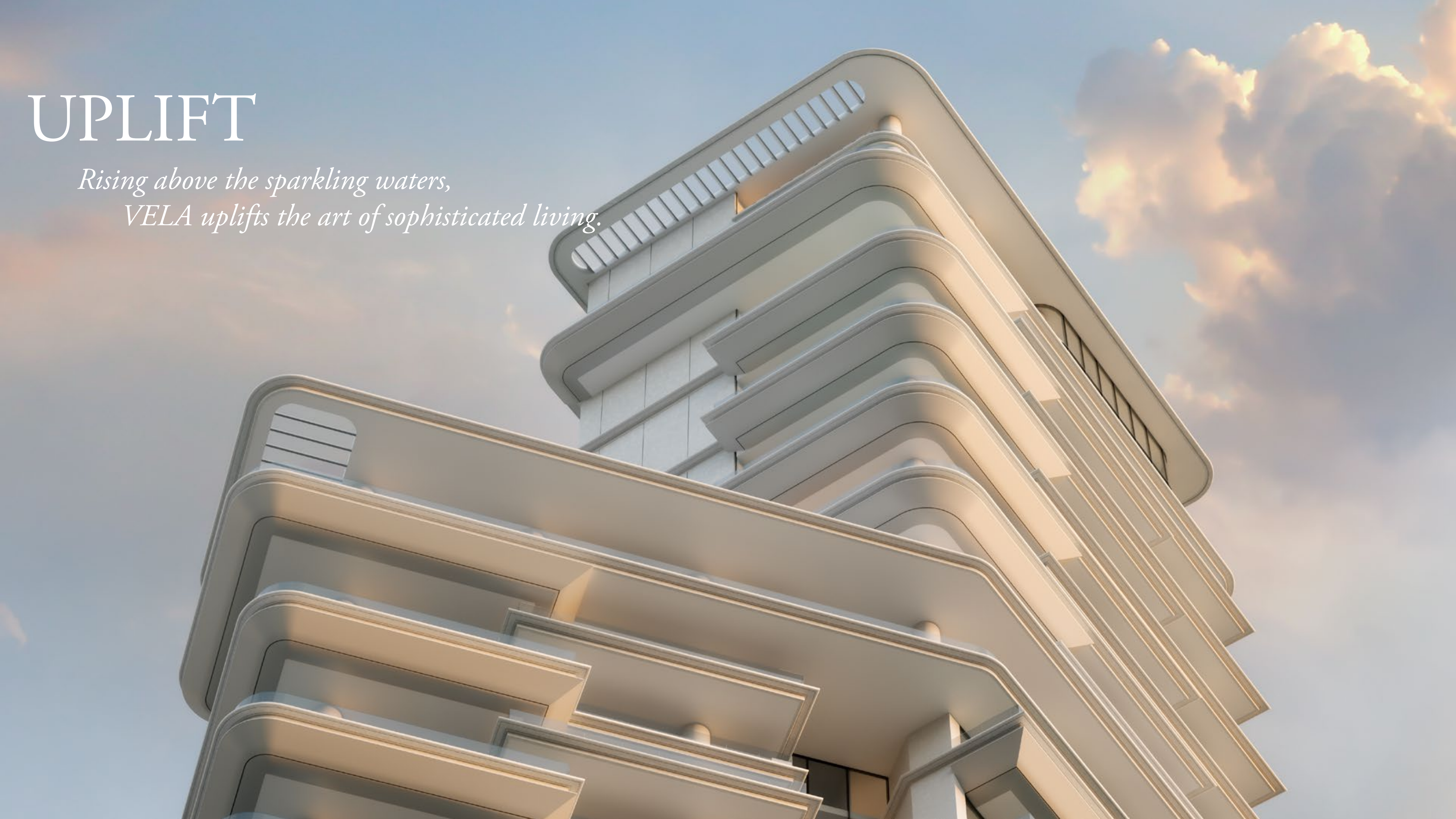


Mandarin Oriental Ritz, Madrid



Hakkasan, Miami





# UPLIFT

*Rising above the sparkling waters,  
VELA uplifts the art of sophisticated living.*



A white Maserati car is parked in a modern, covered driveway. The driveway is supported by large white columns and has a curved, overhanging roof. The car is facing away from the viewer, showing its rear with the Maserati logo. To the left of the car is a glass wall with vertical wooden slats. To the right is a glass railing overlooking a body of water with several boats and a city skyline in the background. The sky is clear and blue.

# A Sensory Arrival



## *The only waterfront arrival in Marasi Bay*

Welcomed by the delicate music of water and a bold quadruple-height colonnade that rises to frame the soothing beauty of this waterfront location, arriving at VELA is a sensory experience. Layers of water features draw the marina up to the lofty heights of VELA, creating a moment of sheer enchantment where elegance meets sophistication in every direction, from the beauty and drama of the architecture above to the breath-taking panoramic views that surround.















## Wraparound Pools


Time finds soft rhythm in the flow of water that stretches as far as the eye can see.

Uniquely designed L-shaped corner pools that are found nowhere else in Dubai, frame each residence with a ribbon of serene freshness. Sun decks overlooking the Marasi Marina and the iconic Burj Khalifa offer plenty of space for relaxing, entertaining, or just enjoying the fresh air and moment in time.







The image is a promotional photograph for a luxury residential development. It features a large, modern high-rise building in the foreground, characterized by its light-colored, curved balconies and glass railings. The balconies are furnished with outdoor furniture, including lounge chairs and tables, and some have small potted plants. The building's architecture is contemporary, with large windows and a clean, minimalist design. In the background, a city skyline is visible, featuring several tall, modern skyscrapers. A body of water, likely a marina or harbor, is situated in the foreground, with numerous boats and yachts docked at the piers. The scene is captured during the "golden hour" of sunset, with the sun low on the horizon, casting a warm, golden glow over the entire scene. The sky is a mix of orange, yellow, and blue, and the water reflects the colors of the sky and the buildings. The overall atmosphere is one of luxury, modernity, and a high-quality lifestyle.

*Only 38 stunning residences designed  
for the discerning few who seek  
a life without boundaries.*









## A Crafted Collection

Rising at to 492 feet (150 meters), VELA provides a floor area of 272,860 sq. ft. spread over 30 floors. The 38 residences range in size from 4,253 sq. ft. to 11,727 sq. ft. and encompass sumptuous penthouses and three-and four-bedroom properties, some with double-height living spaces and private terrace pools.

The tower is crowned by the Sky Palace, vvhich covers 22,992 sq. ft. spread over three floors with two swimming pools, grand terraces, a private gym and majlis.



# VELA Residences

## SKY PALACE

- 5 Bedroom – 22,992 sq. ft.

## SKY RESIDENCES

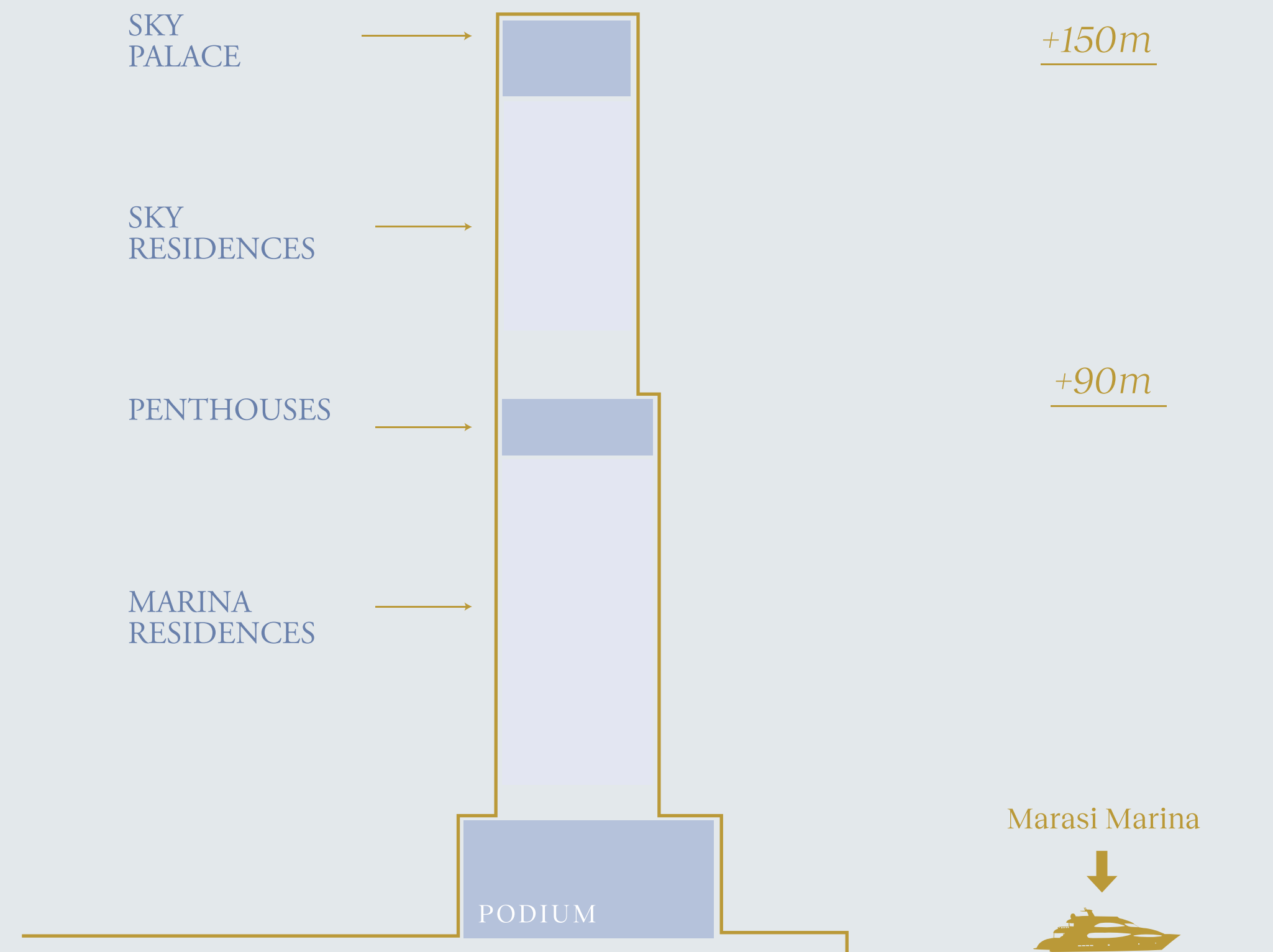
- 3 Bedroom – 6,302 sq. ft.
- 4 Bedroom – 8,462 sq. ft.

## PENTHOUSES

- 4 Bedroom – 11,048 to 11,727 sq. ft.

## MARINA RESIDENCES

- 3 Bedroom – 4,253 to 6,361 sq. ft.
- 4 Bedroom – 7,262 to 7,374 sq. ft.





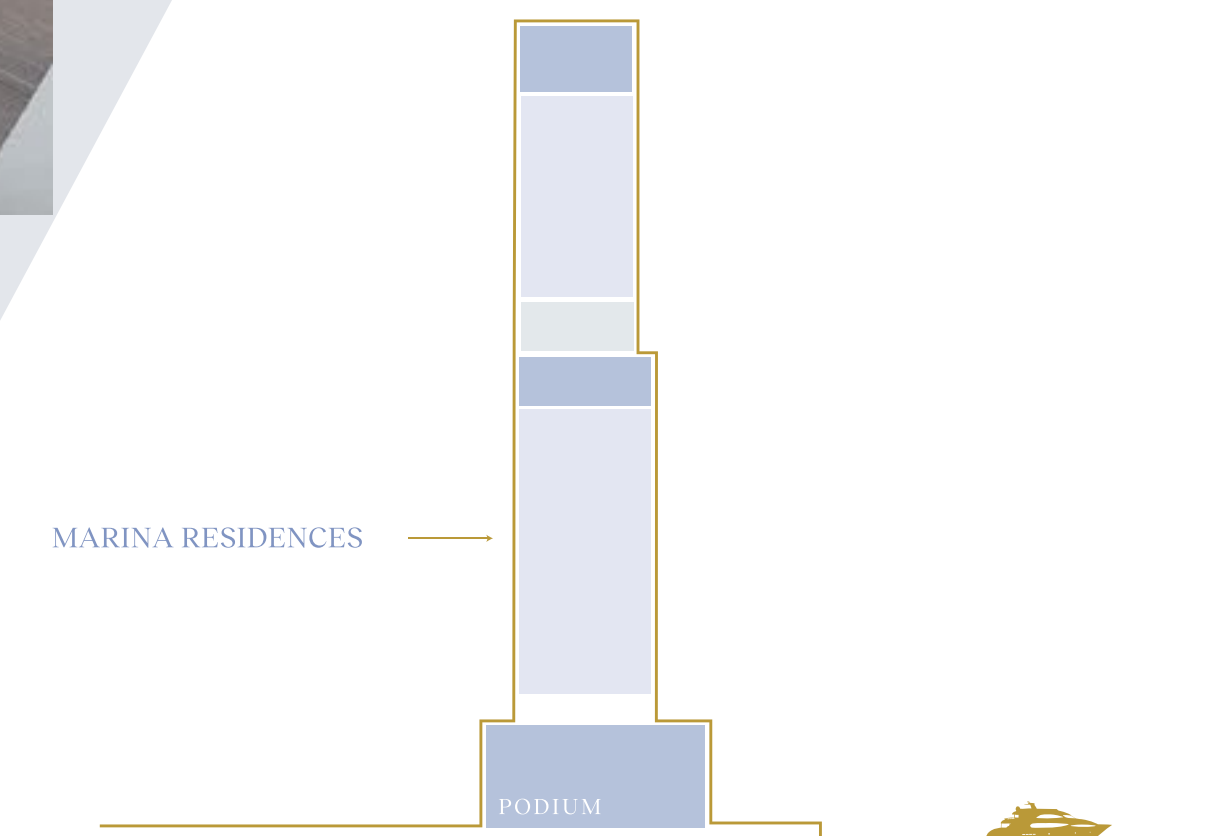
# Marina Residences







Life at the Marina Residences moves like the gentle flow of water. Here, the energy of the Marasi Marina fuels a lively pace of life that dances its own path through the promenade. For this is a new way of living in the city of Dubai, full of fresh moments that calm the mind and free the spirit.









# Sky Residences

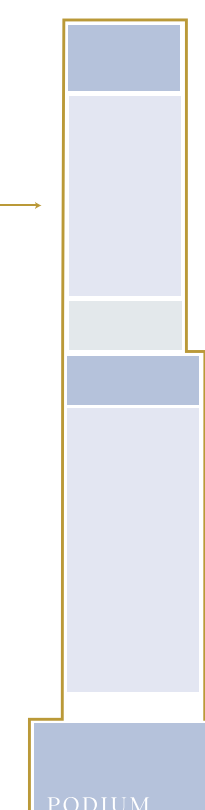






Designed with magnificence in mind, the Sky Residences are beautifully light and spacious, and optimised for full enjoyment of their inspiring views. From the interior heights of sophistication within, to the expansive terraces reaching out to the skies above, the Sky Residences bring an elevated standard to a waterfront way of life, overlooking all that Dubai has to offer.

SKY RESIDENCES













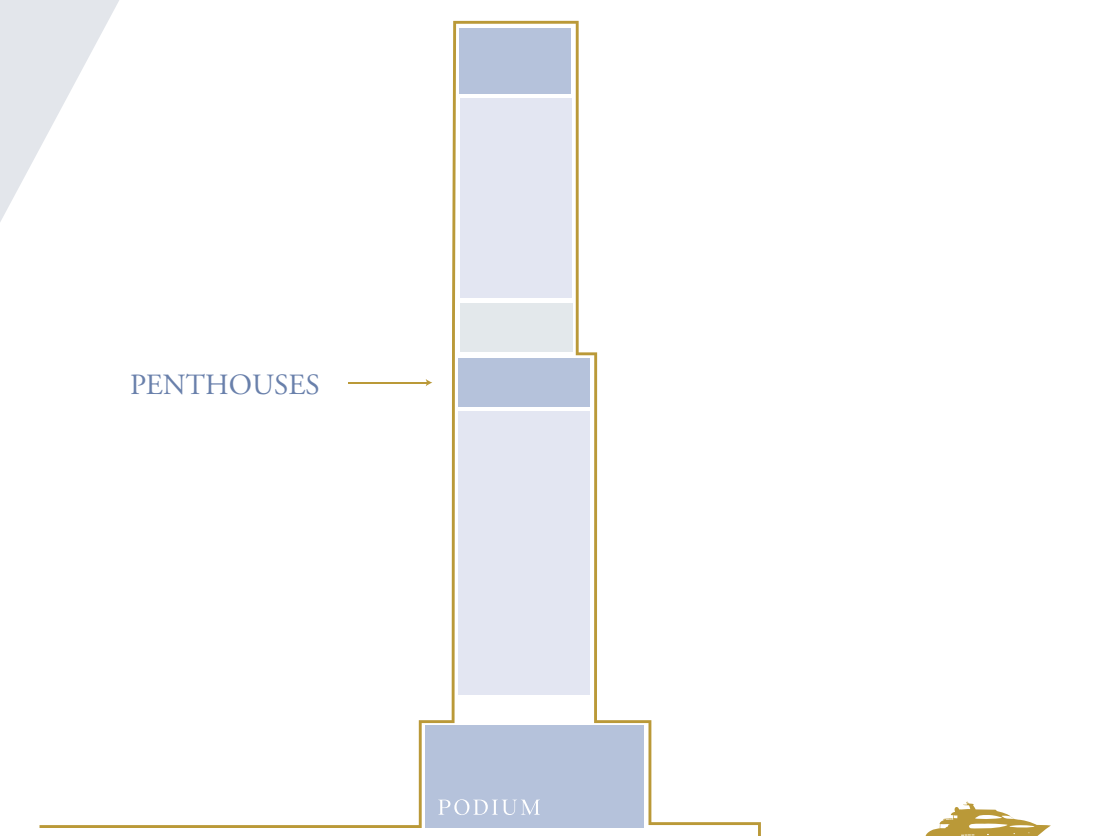
# Penthouses







Starring double-height ceilings and incredible private pools, the three Penthouses marry sublime refinement with the vibrant life of the marina below. VELA's Penthouses sing out with a lofty sense of beauty and boldness that shapes your elegant sanctuary poised peacefully above the rest. The perfect space in which to unwind and watch over the ever-changing city below you.





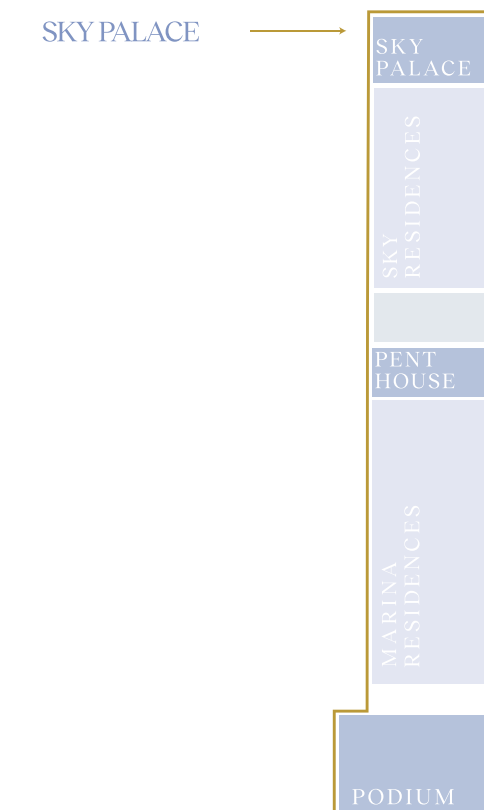
# Sky Palace







For a life lived amongst the highest, the Sky Palace celebrates the pinnacle of design and living experience. Vast living spaces are spread over three floors with two sparkling swimming pools, grand terraces, a private gym and majlis. Magnificent heights reveal a panoramic vista that lifts the spirit from every angle and offers you an elevated doorway to the dynamic lifestyle on offer in this unique Dubai destination, fully immersed in the culture and beauty that surrounds your every aspect.



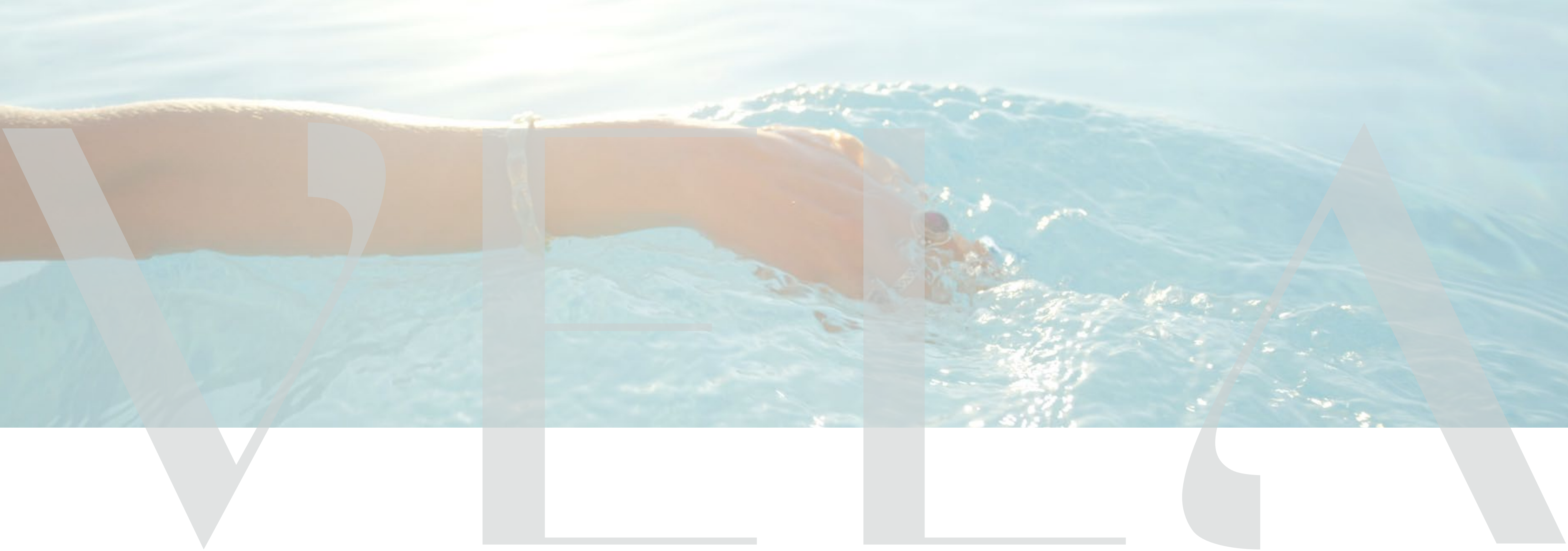




# GLIDE

*Where serenity welcomes the spirit  
and sophistication soothes the mind.*





## Exceptional Amenities

Revel in the infinity lap pool that appears to float effortlessly above the marina, or simply relax on the sun deck while admiring the infinite cityscape and the vast expanse of water beyond.

The triple-height gym offers breathtaking panoramic views of the marina. These are accompanied by a cinema room, children's play areas, impeccably furnished meeting rooms, and a private spa suite and salon.







# Access to Amenities at The Lana

Residents of VELA enjoy access to the hotel facilities, including the spa as part of an exclusive membership. A golf-buggy service is on hand for easy transportation along the promenade.





# BASK

*Where soft-sand coastline meets endless  
blue horizons beneath the Arabian sun.*





Residents of VELA enjoy exclusive access to the ultra-luxe beach club at OMNIYAT's iconic property, One at Palm Jumeirah.

Managed by Dorchester Collection, the exclusive beach club features a glorious 100-metre white sand private beach, with its own jetty and direct access to the beach promenade.

For the ultimate voyage experience, a 'flying' yacht can be arranged to sail away from Marasi Bay, arriving directly to the jetty at One at Palm Jumeirah.



 Dorchester Collection  
DUBAI







## VELA's Amenities

- Main, VIP & Marina Lobby
- Infinity-Edge Lap Pool
- Triple-Height Gym
- Spa Suite and Salon
- Kids Room
- Cinema Room
- Meeting Rooms & Lounge
- Security
- Valet
- Hotel facilities at The Lana, Dorchester Collection, Dubai
- Beach club at One at Palm Jumeirah, Dorchester Collection, Dubai



An aerial, high-angle photograph of a modern, curved swimming pool. The pool's edge is a smooth, light-colored concrete or stone. The water is a vibrant turquoise color, with gentle ripples on its surface. Along the left side of the pool, there is a row of white lounge chairs. Each chair is accompanied by a large, tan-colored patio umbrella and a small, round, dark-colored side table. The lounge chairs are arranged in a way that they face the pool. The overall atmosphere is one of luxury and relaxation. The lighting is bright, suggesting a sunny day, and the shadows are soft and elongated.

# SERENE

*Set sail on the serene breeze of  
impeccable amenities and service.*





Managed by

) ( *Dorchester Collection*

Here, amongst radiant design and extraordinary service, a life of rarefied ease awaits in the hands of Dorchester Collection. The doorman and porter will welcome you on arrival, while your private collection of cars can be kept pristine by a car valet service.

Dorchester Collection's dedication to offering the finest service means residents enjoy additional benefits, including housekeeping, maintenance, laundry, personal trainers, spa appointments, in-residence dining and restaurant reservations..



# Classic

- Common area maintenance and cleaning
- 24/7 residence concierge
- Doorman and porter services
- Valet parking
- Lifeguard and gym service
- 24/7 security services

# À La Carte

- Housekeeping
- Laundry
- Maintenance
- Bespoke in-residence catering services
- One-off dining events & functions
- Floristry services
- Bookings, reservations & appointments
- Five-star experiences at home





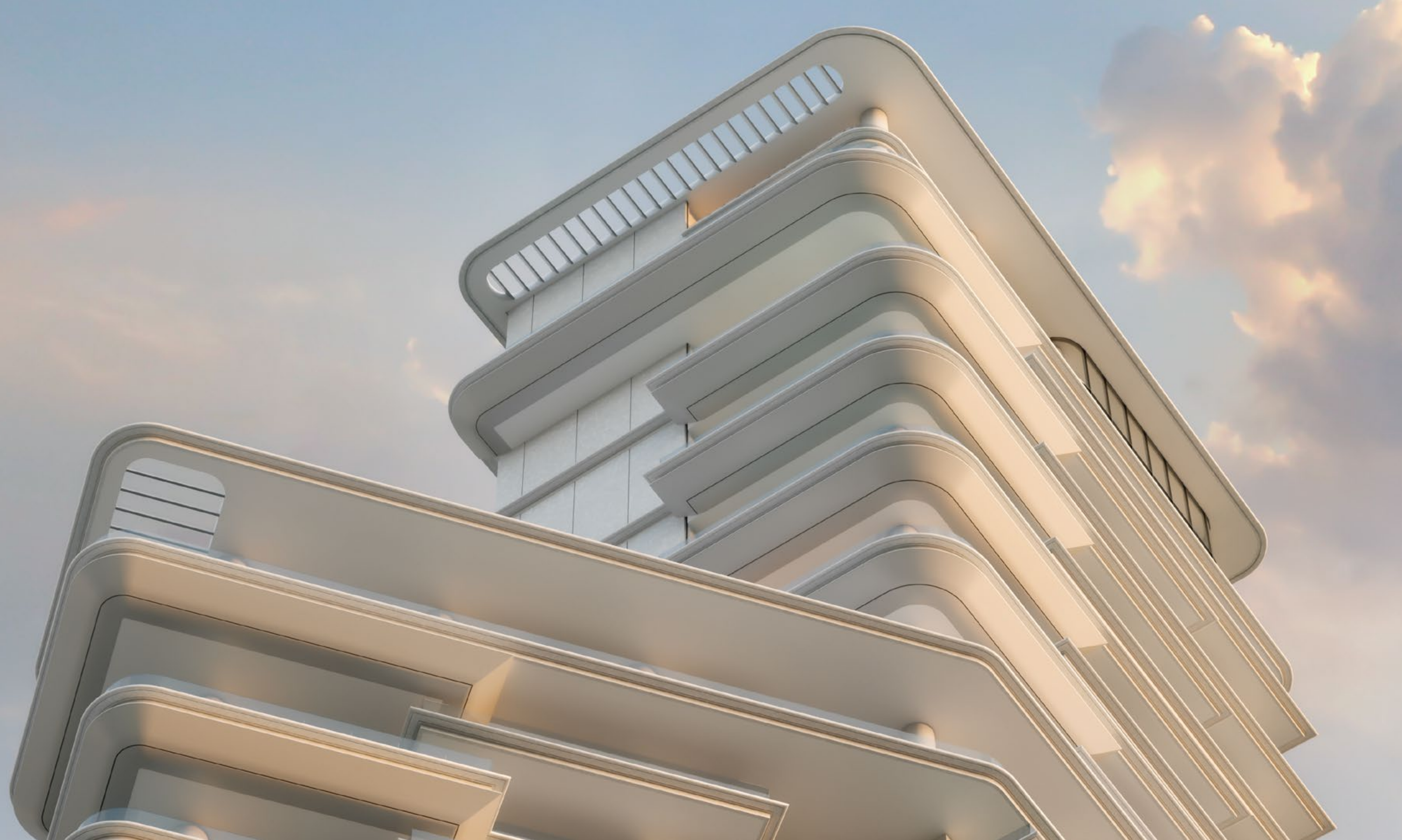


## Legendary Hospitality

Dorchester Collection is a portfolio of the world's foremost luxury hotels and residences. Their unique properties are all legendary in their own right, with rich heritages and worldwide reputations as extraordinary places where moments are treasured and memories are made. Situated in some of the world's most vibrant cities, their destinations include London, Paris, Milan, Rome and Los Angeles.

OMNIYAT and Dorchester Collection have collaborated closely to introduce The Lana, Dorchester Collection, Dubai-the brand's first foray into the region and its tenth worldwide hotel.







# OMNIYAT

THE ART OF ELEVATION